

HD Intelligent Pedestrian Detection System



AI

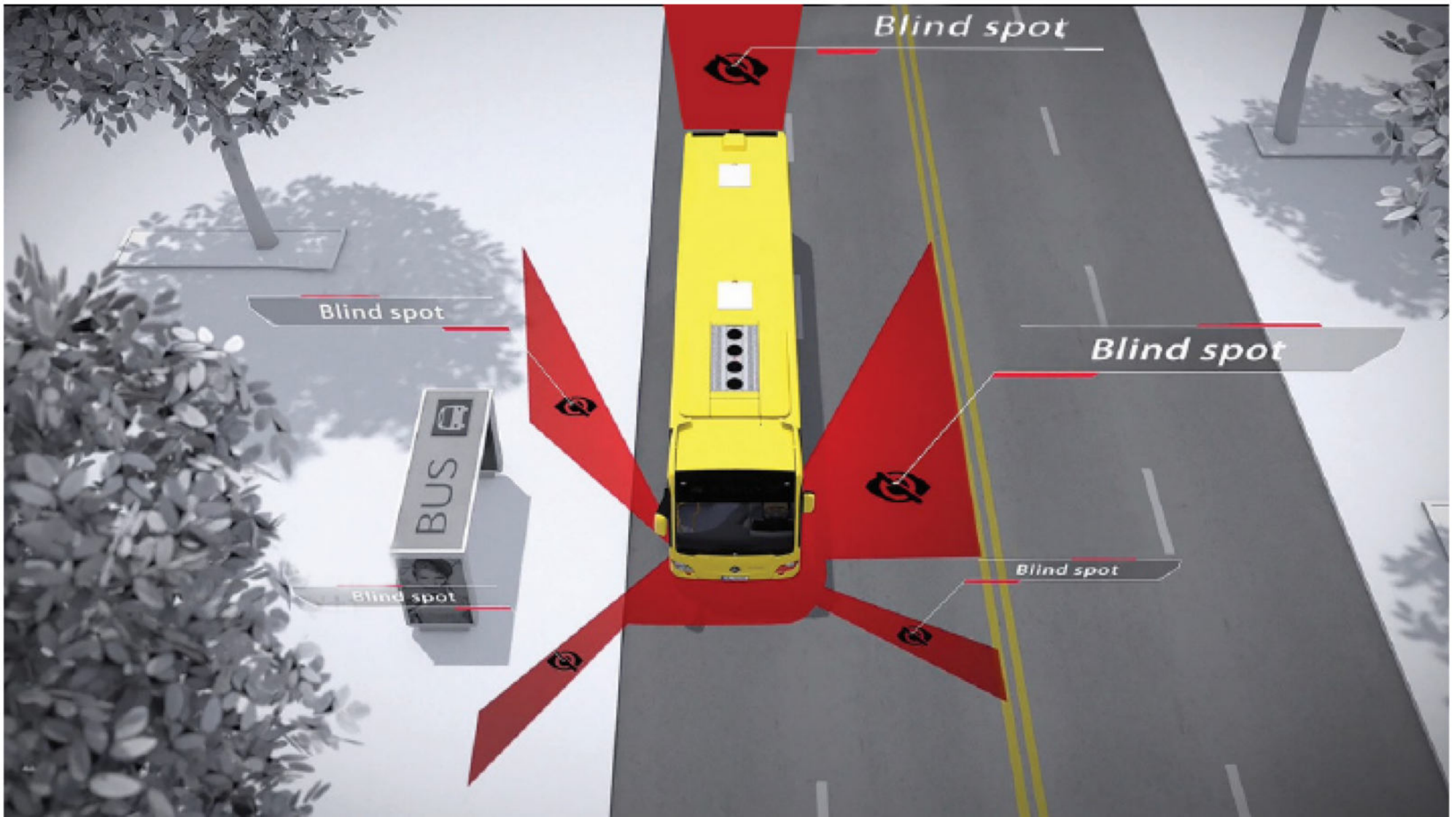
(ADA38)

BUS Knowledge

KFRA
AUTOMOTIVE COMPONENTS

? Are you bothered by following issues?

- How to deal with blind spots when taking a turn or changing lanes?
- How can drivers be warned of pedestrians or cyclists on road?





Here is a solution for problems above---an intelligent pedestrian detection camera!

Pedestrian Detection Camera provides HD pictures of areas around the vehicle, including those not covered by traditional mirrors. With deep learning technology, it detects pedestrians and cyclists and sends out audio & visual alarms in real time. In this way, drivers could avoid running onto pedestrians when taking turns or reversing.



Features

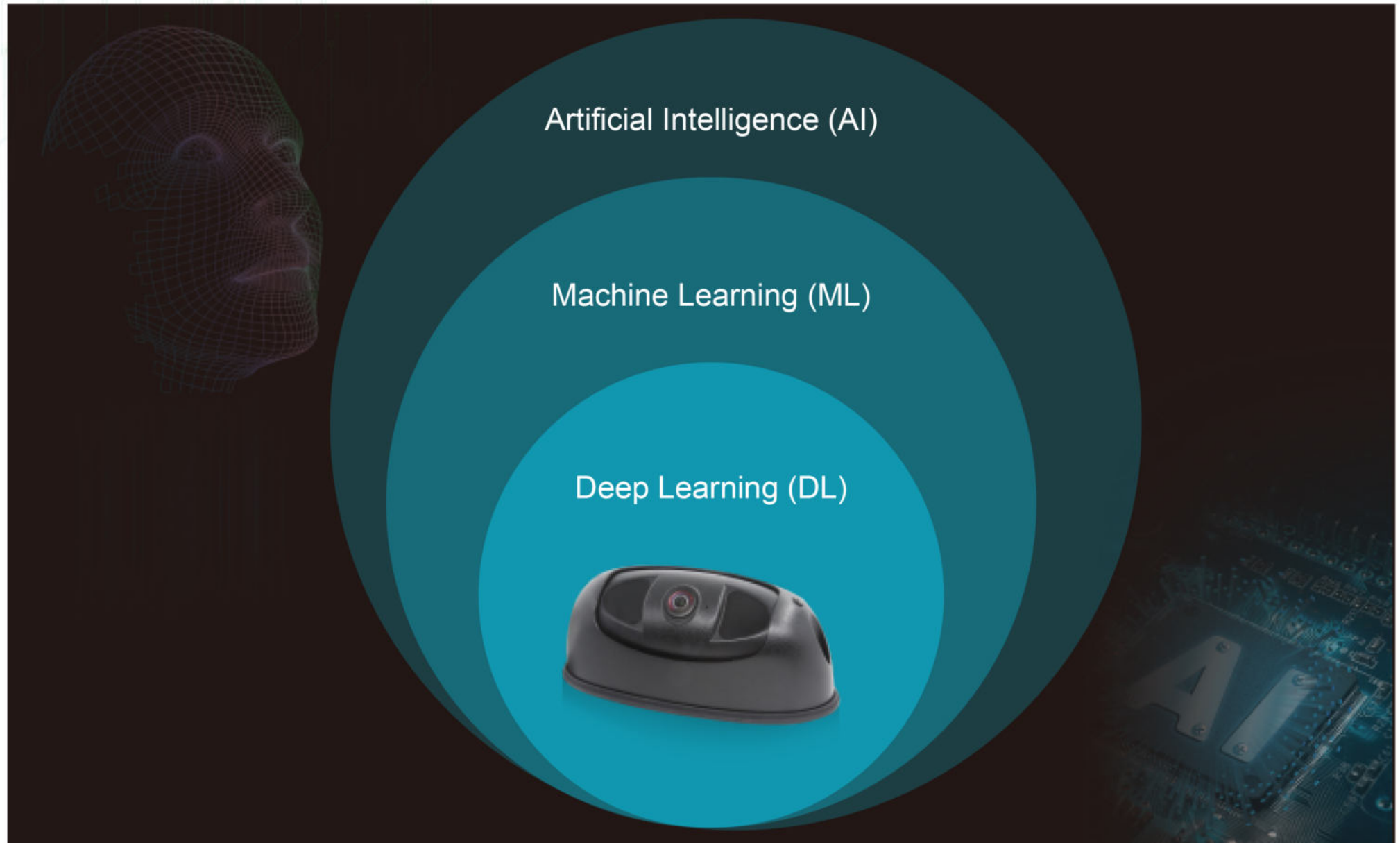
- Detecting vulnerable road users and warning drivers
- Waterproof and dustproof rating: IP69K, anti-vibration rating: ISO 16750-3(5.9G).
- Pedestrian detection range: Downward view: 3m x 6m.
Rear view: 0.5-12m
Side view: 0.5-20m
- 1080P video output (with alarming frame).
- Audio alarm output to monitors or other devices with speaker.
- Camera should be installed downward with suggested mounting height of 2.5m-3.5m for the best detection result.
- Lens parameters: Downward view camera: 1.4mm, with the horizontal angle of 170°
Rear view camera: 2.3mm, with the horizontal angle of 140°
Side view camera: 6mm, with the horizontal angle of 52°
- USB2.0 interface, connected to Wi-Fi modules and USB.
- Easy calibration done by phones through a web link
- Automatic upgrade via USB

Specification

	Downward view	Side view	Rear view
Focus / Horizontal Viewing Angle	1.4mm/170°	6mm / 52°	2.3mm / 140°
Detection Distance	3 x 6m	0.5 ~20m	0.5~12m
Supply Voltage	DC10V~32V		
Max. Consumption	320mA		
Video Format	1920×1080/25f or 1920×1080/30f		
Video Output	AHD(1.0Vp-p,75Ohm)		
Audio Output	Warning sound signal output		
Working Temperature	-20 ~ +70°C		
Storage Temperature	-40 ~ +85°C	-30 ~ +80°C	
Waterproof Rating	IP69K		
Size	139.7 x 63.2 x 53.5mm		
Weight	386g		
Housing Color	Black		
Connector	8Pin mouse male connector, 4Pin aviation female connector (power, video, audio) on transition cable, USB2.0 female connector, I/O wire for alarm output		

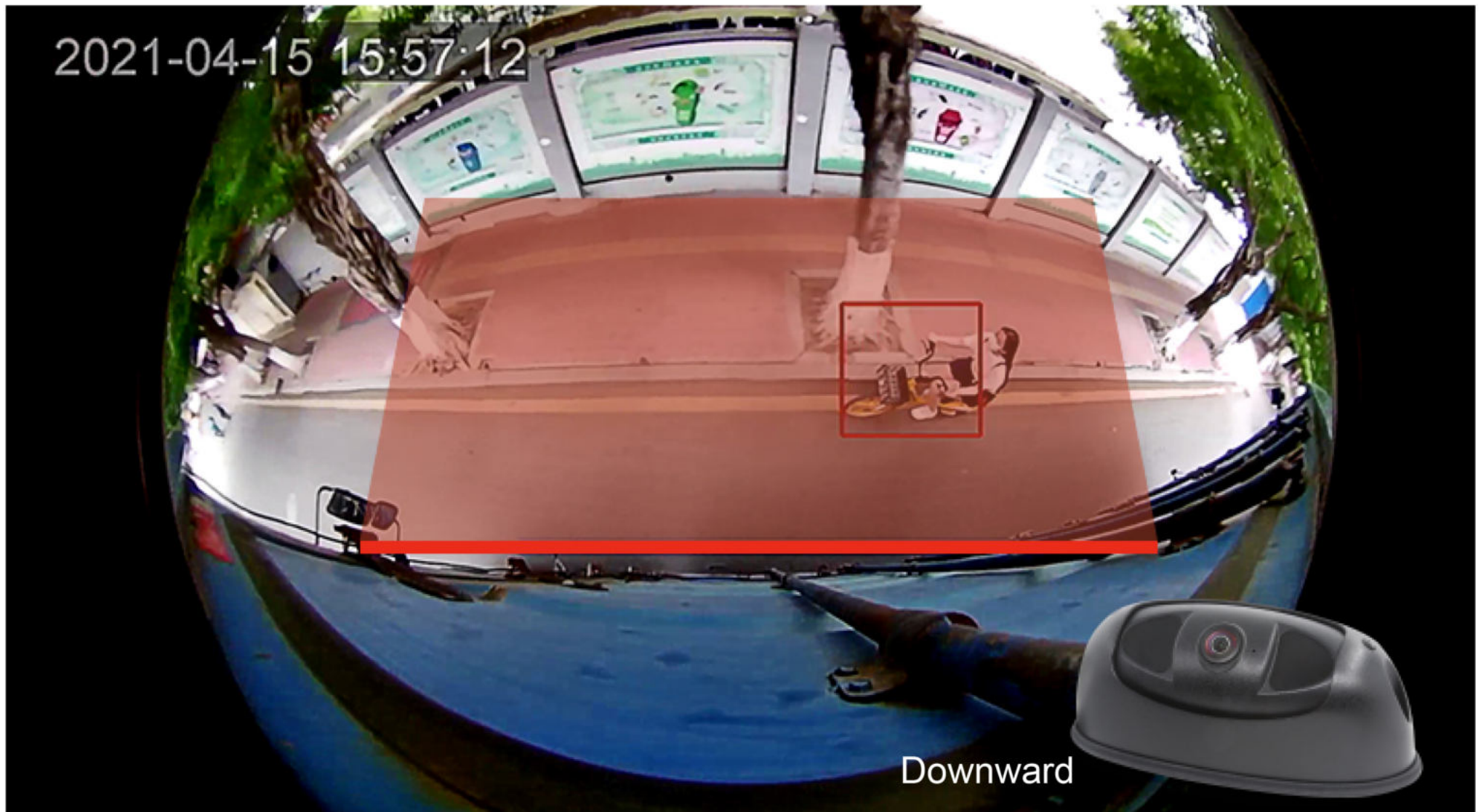
AI algorithm

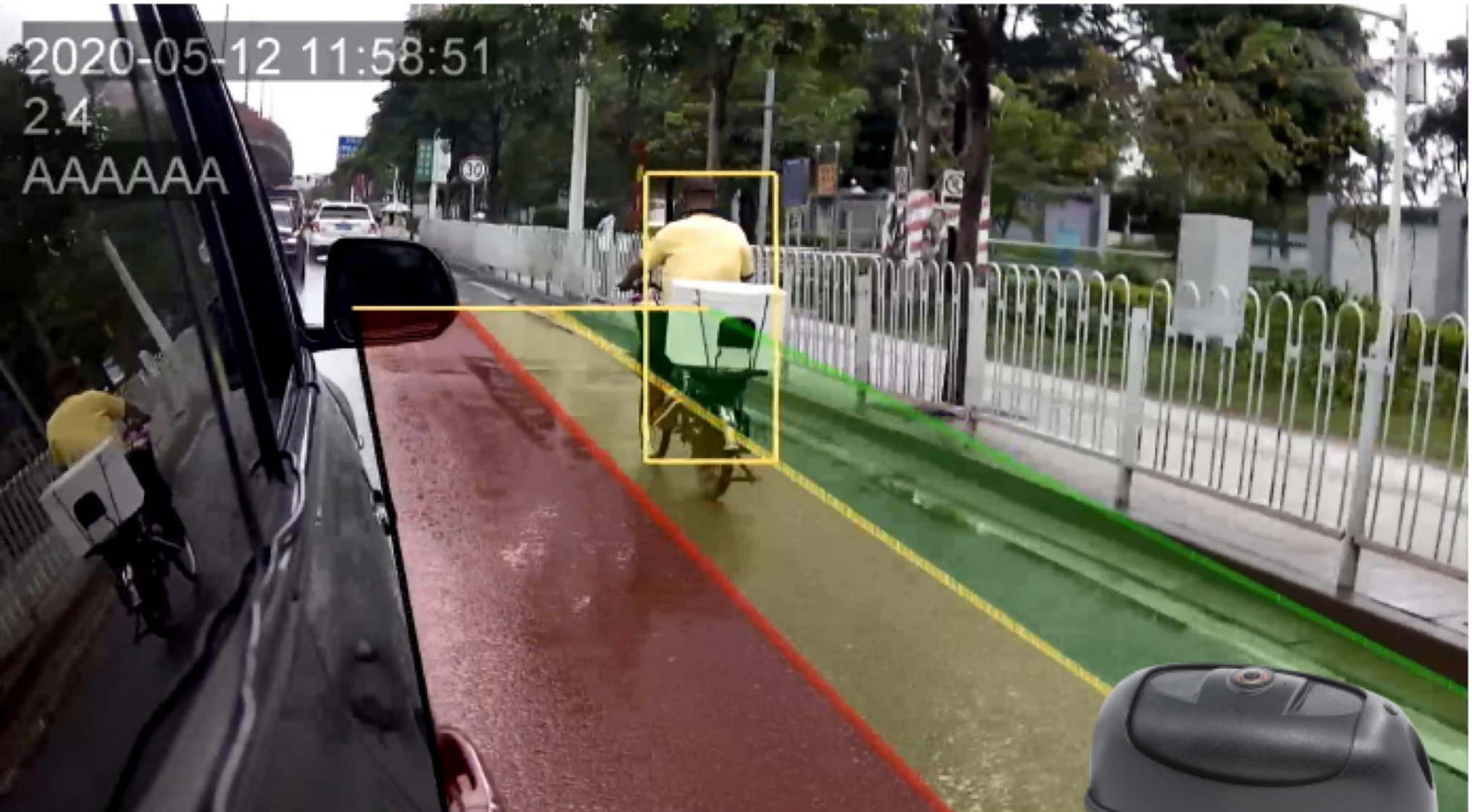
HD intelligent pedestrian detection system adopts deep learning technology for intelligent and accurate pedestrian detection.



Detecting and warning in all-round vision includes downward view, side view and rear view

HD intelligent pedestrian detection camera provides automatic alarm information to drivers (1080P video output, pedestrian alarming frame), and reduces the risks of accidents.



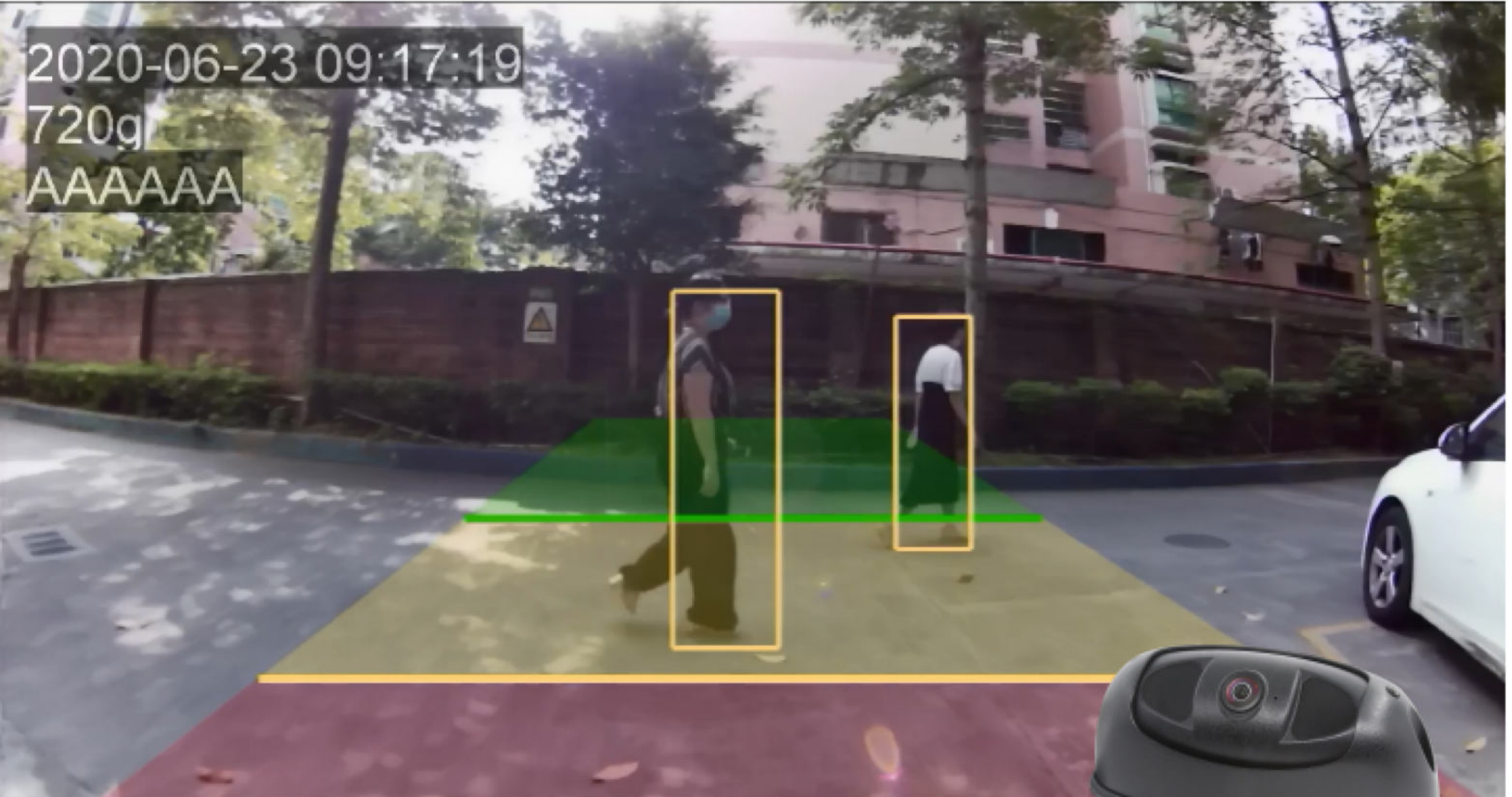


Side view

2020-06-23 09:17:19

720q

AAAAAA



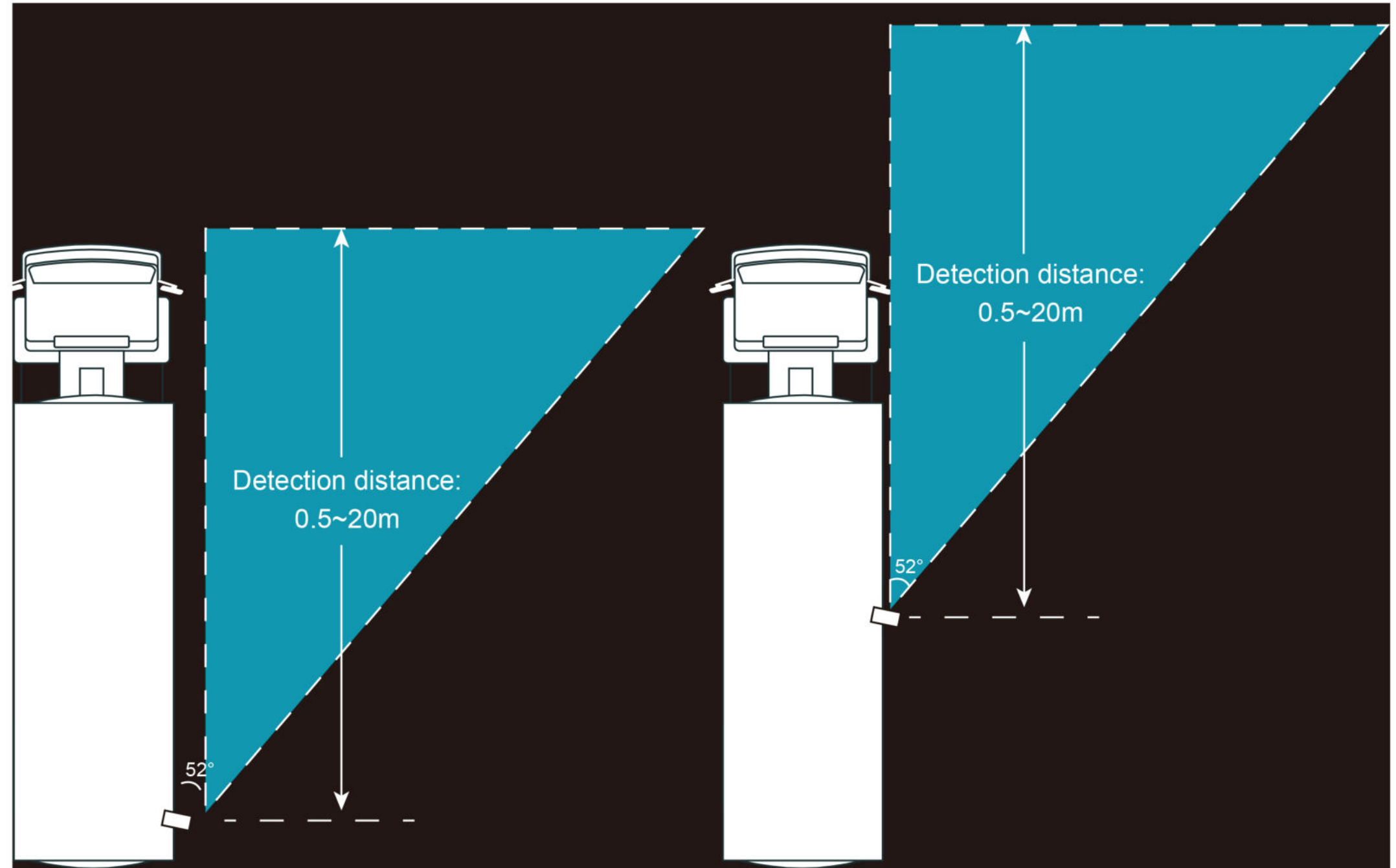
Rear view

Pedestrian Detection range (Downward view): 3m x 6m



Detection range: 3×6m

The distance for pedestrian detection reaches up to 20 meters (Side View)

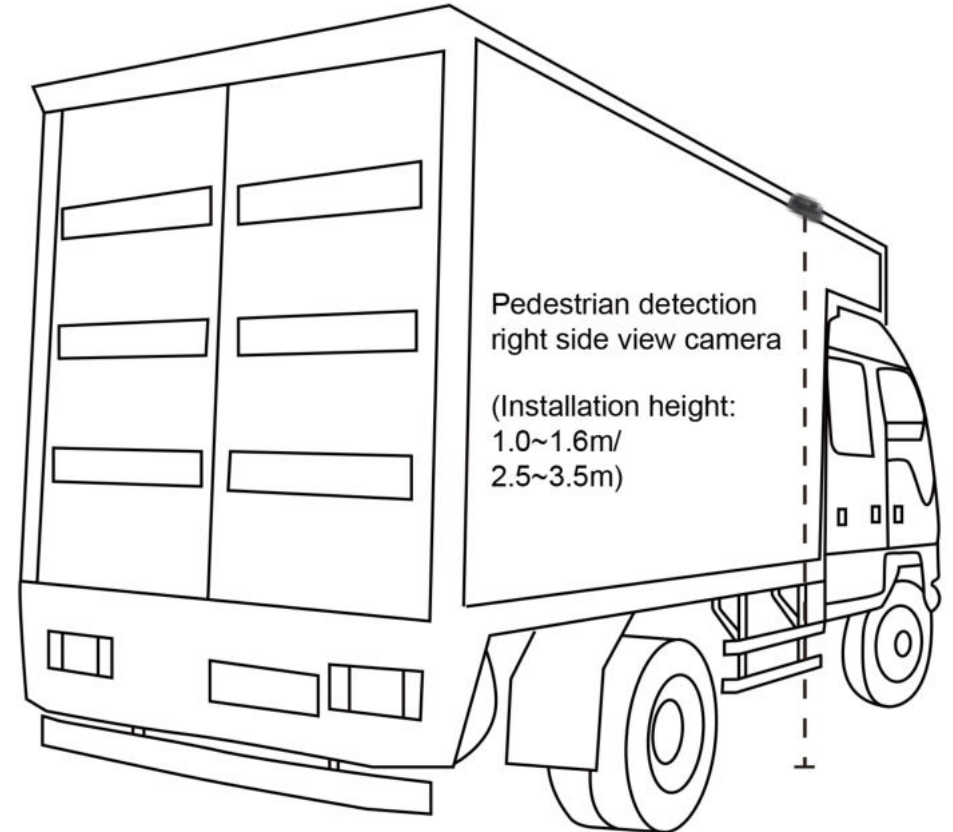
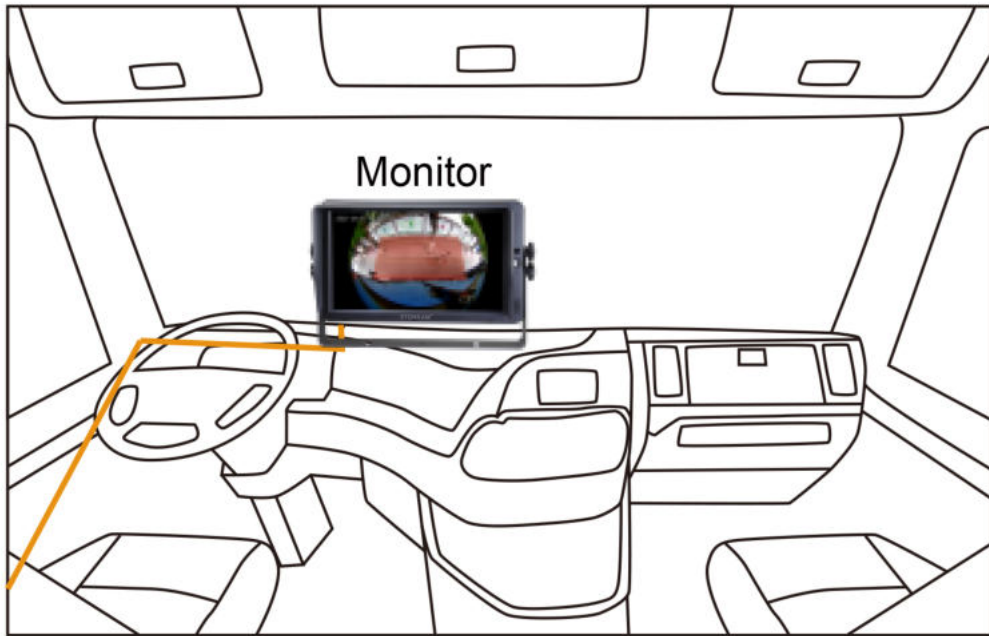


IP69K waterproof, weatherproof and durable



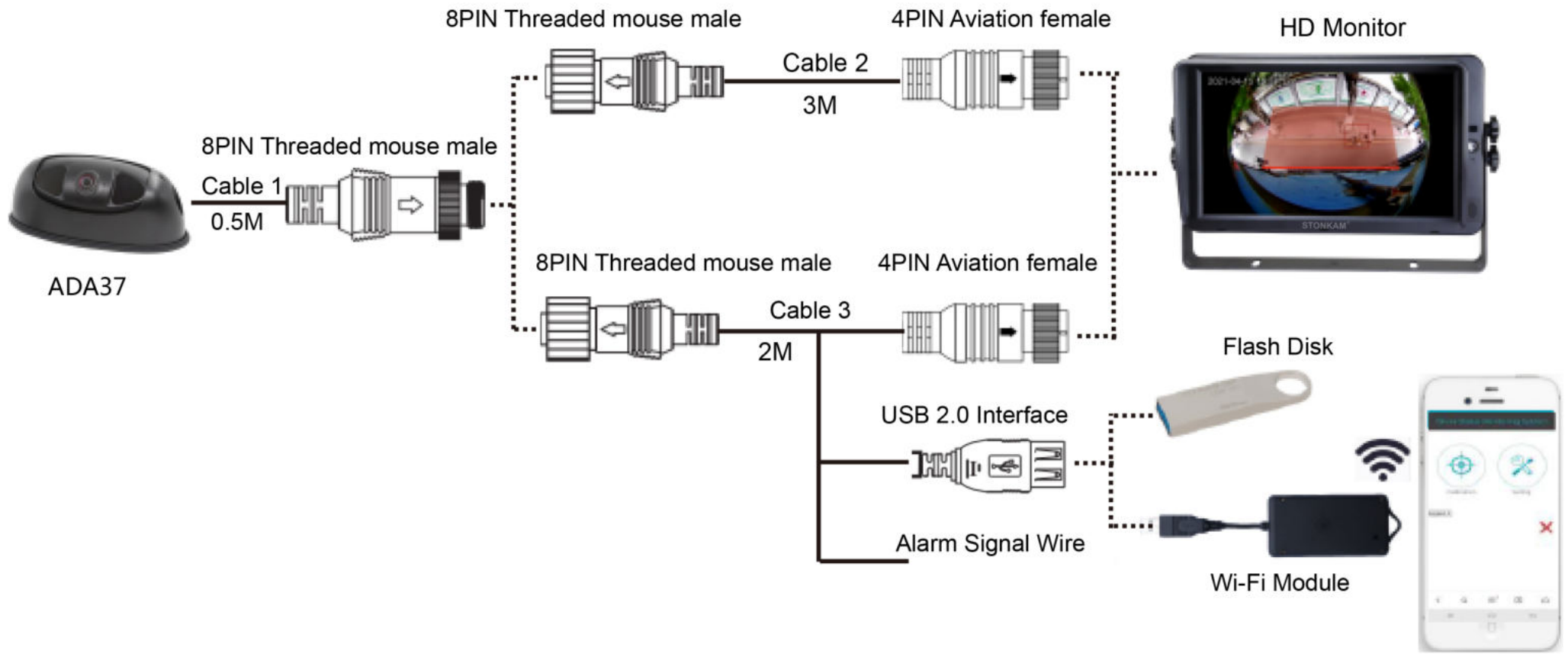
Easy installation

When the camera is installed on the two sides, it's recommended to be at 2.5m-3.5m height for downward view, and 1.0m-1.6m for forward side view.



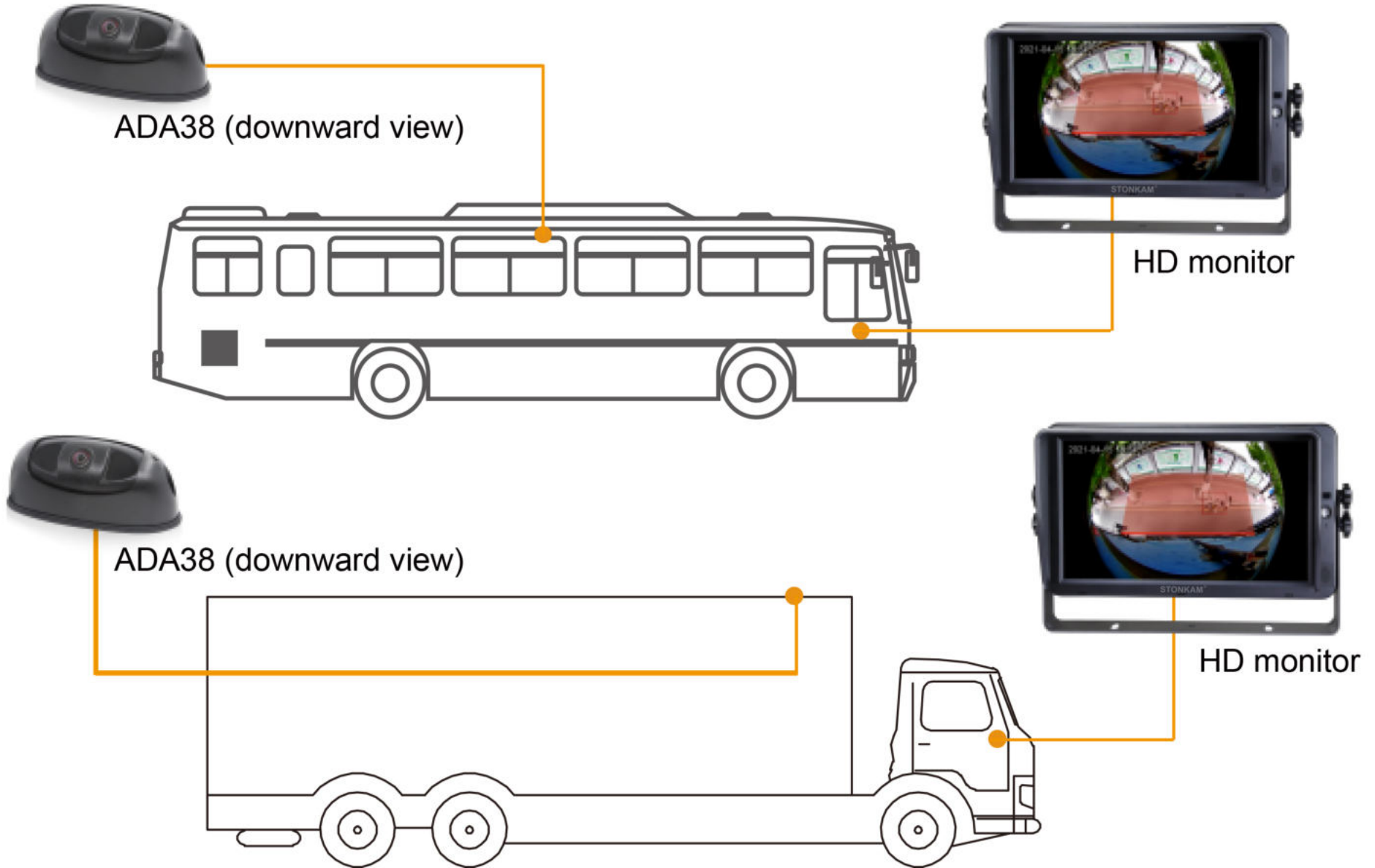
Connection

Mobile phones can connect with the camera via the external Wi-Fi module, and calibrate & set up the camera.



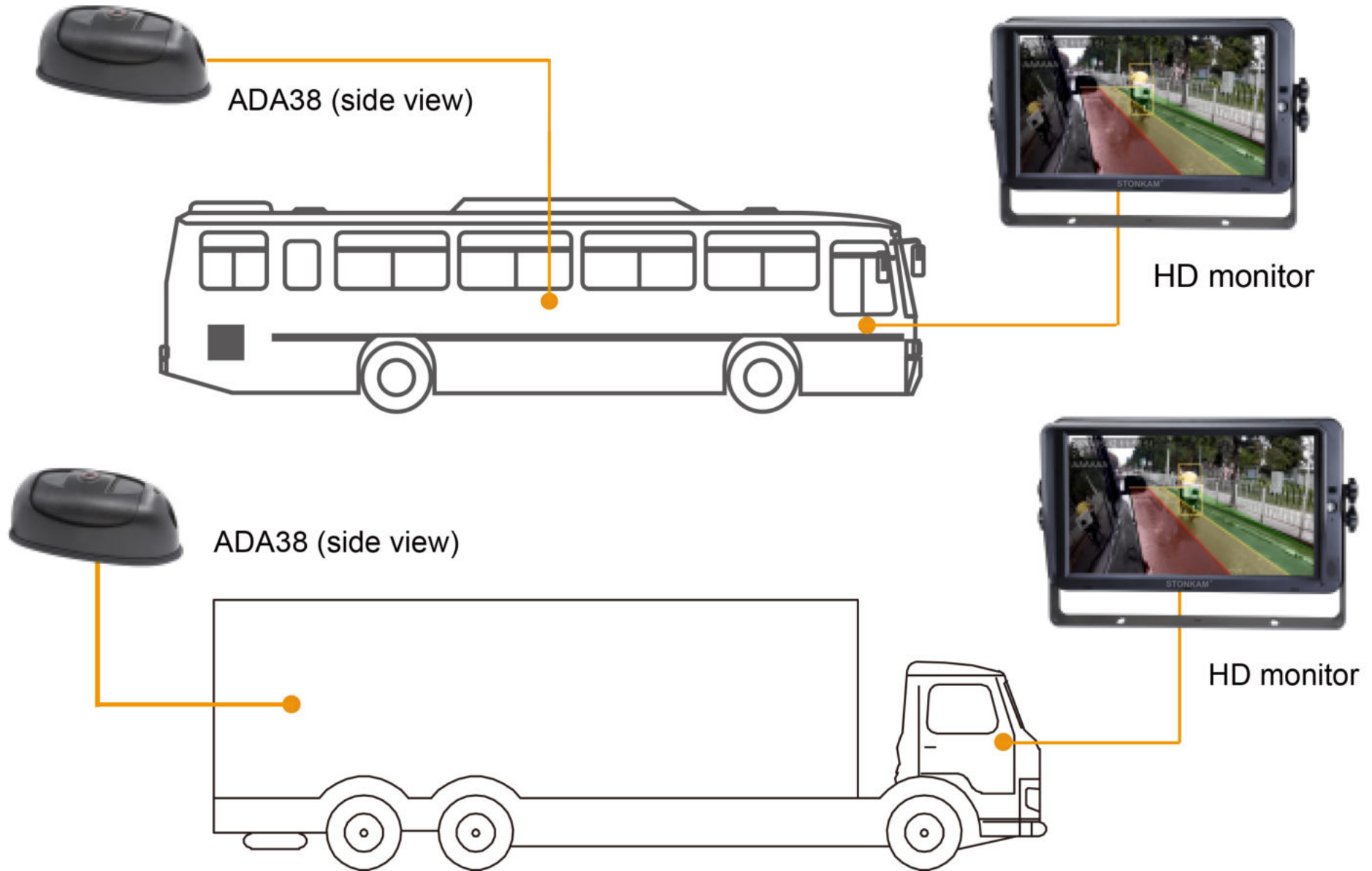
Application

pedestrian detection camera is fit for various vehicles, such as buses, coaches, trucks, and construction machinery, etc.



Application

pedestrian detection camera is fit for various vehicles, such as buses, coaches, trucks, and construction machinery, etc.



Application

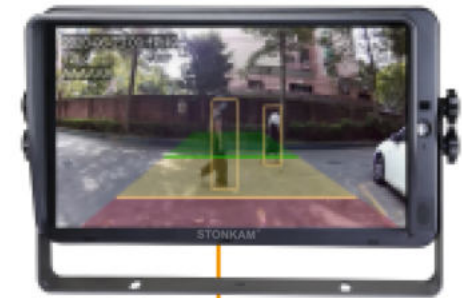
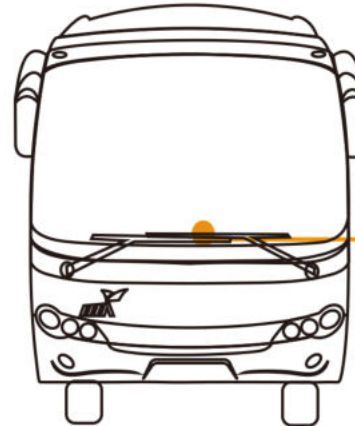
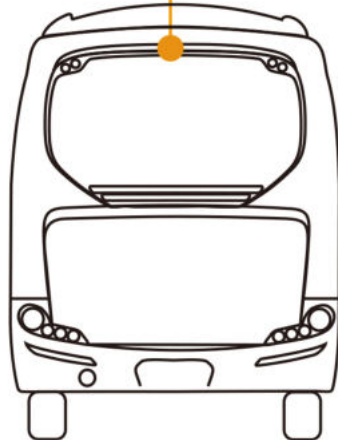
pedestrian detection camera is fit for various vehicles, such as buses, coaches, trucks, and construction machinery, etc.



ADA38 (Rear view)

kit includes

- x1 HD monitor dual screens
- x2 cameras (1 front+1 side)
- x2 wiring
- x1 camera calibration system



HD monitor